

Scale & Corrosion Inhibitor

Instructions for use and additional helpful product tips and information

- For more information about JoJo and our range of products, please visit our website.
- For correct installation, use and maintenance, please read these instructions carefully and keep them safe for future reference.
- If you have questions concerning the product, send an email to filterinfo@jojo.co.za or send us an enquiry via our website and we will assist and advise accordingly.
- When replacing the crystals, use JoJo Phosphorus Silicon Crystals.

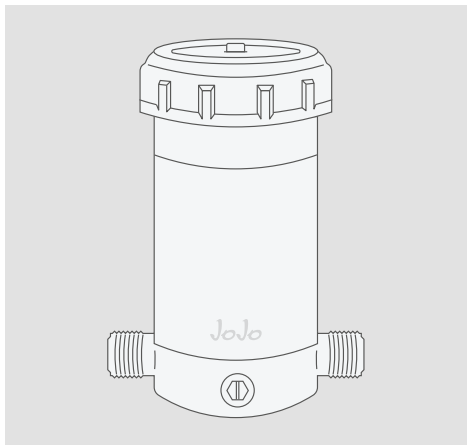
Features & Benefits

- ✓ Easy to install
- ✓ Ideal for water of low to medium hardness
- ✓ BPA-free, food-grade material (housing)
- ✓ Protects pipework
- ✓ Prevents corrosion
- ✓ Reduces energy consumption
- ✓ Environmentally friendly

Applications

- ✓ Solar systems
- ✓ Air-conditioning
- ✓ Underfloor heating
- ✓ Heat exchangers
- ✓ Appliances
- ✓ Hot water systems

PRODUCT SPECIFICATIONS



Product Specifications

Water source: Municipal water

Operating pressure: 100 - 400 kPa*

Operating temperature: 2 - 45°C

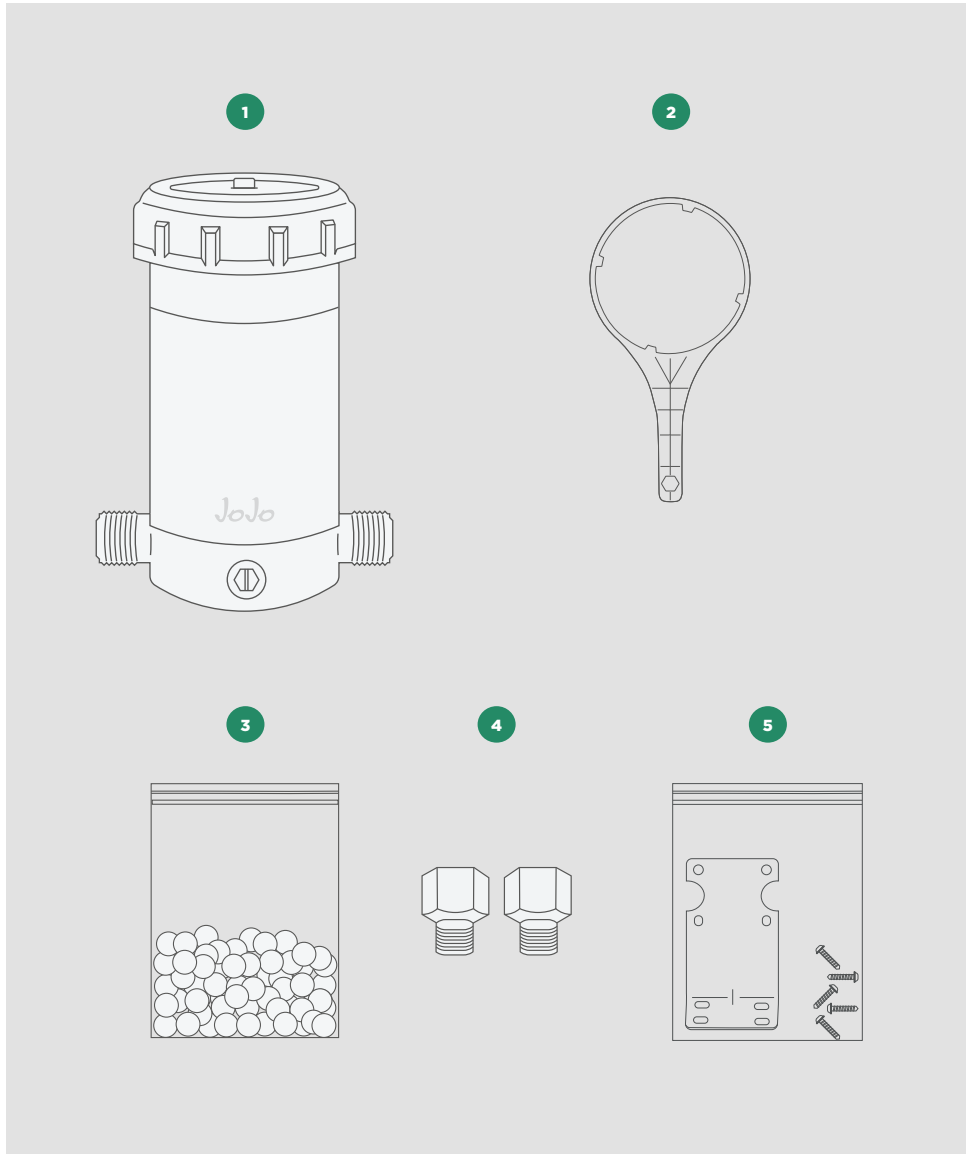
Maximum flow: 30 l/min**

Note: the water filtered by the JoJo Scale and Corrosion Inhibitor is not safe for consumption and should be filtered by one of our other filtration products before using the water for consumption. This product only conditions the water and reduces the level of hardness.

i Important

In order to increase effectiveness and lifespan of filtration, it is advised to use municipal water. Tank water may also require a sediment pre-filter. Please contact us for more information.

PACK CONTENTS



1. Scale & Corrosion Inhibitor housing

2. Housing spanner

3. Phosphorus silicon crystals

4. Brass thread adaptors

5. Mounting bracket and fasteners

INSTALLATION

- It is advised to make use of a plumber/professional installer to install this system. Warranty will be void if not installed according to the instruction manual.
- Choose the installation location and turn off the water supply.
- Apply thread tape to the inlet and outlet threads.
- Connect "IN" side to inlet pipe and "OUT" side to outlet pipe. **Note:** pay attention to the "IN" and "OUT" indicators at the bottom of the product.
- Use the supplied spanner to open the top cover anti-clockwise.
- Fill with the Phosphorus Silicon Crystals until full.
- Open water supply and ensure there are no water leaks.
- Mounting bracket and fasteners are also supplied should you want to mount the scale inhibitor to the wall.

Refill Instructions

- Turn off the water supply.
- Release the internal pressure by pressing the red button. **Note:** some water might release through the valve.
- Use the spanner to open the top cover anti-clockwise.
- Fill with JoJo Phosphorus Silicon Crystals until full.
- Fit and tighten the top cover using the spanner.
- Open water supply and ensure there are no water leaks.

Cleaning the Scale & Corrosion inhibitor

- It is advised to clean out your Scale & Corrosion Inhibitor at least once a month, or each time you replace the Silicon Crystals.
Note: the Silicon Crystals will dissolve over time and need to be filled up when empty. The rate at which they need to be replaced will depend on the water quality and flow rate. Monitoring this on a monthly basis should provide an indication of how often they need to be replaced.
- Turn off the water supply.
- Release the internal pressure by pressing the red button, open the top cover and ensure there is no scale build-up. If there is scale build-up, open the small hexagonal screw-plug at the bottom of the unit to allow the water to drain out.
- Use tap water to flush out all contamination/build-up. A sponge may also be used to clean the housing.
- Once the unit is clean, put the hexagonal screw plug back in place.
- Turn on the water supply and ensure there are no water leaks.

i Important Information

- It is advised to make use of a plumber/professional installer to install this system. Warranty will be void if not installed according to the instruction manual.
- Installation must comply with local plumbing codes.
- **Do NOT use hot water**, this system can only filter water between 2 - 45 °C.
- This system operates between water pressures of 100 - 400 kPa.
- **Do not install this system using copper solder fittings as the heat from soldering will damage the unit.**
- Use PTFE thread tape at all threaded joints.
- If the filtered water develops an odour, please replace the filter immediately.
- Please store spare crystals in a cool and dry place.
- It is advised to clean the housing at least once a month.
- The housing itself is recyclable and BPA-free (not including the Silicon Crystals).
- In order to maintain optimum filtration, it is recommended to replace the crystals before they are completely finished, it is advised to monitor the levels on a monthly basis. *Note: because water quality and volume of consumption varies, filter service life will also vary.*
- In order to increase effectiveness and lifespan of filtration, it is advised to use municipal water.

** If the water source pressure exceeds the maximum pressure, a pressure limiting valve may be needed.*

*** Flow rate depends on the inlet water flow rate and pressure.*

Thank you for choosing JoJo's advanced filtration technology. If there is anything that you are unsure of or need assistance with, please do not hesitate to contact us.