

Which filtration solution is right for you?

Whatever your setup and needs, enjoy great quality water with our new filtration range.

What makes JoJo Filters different?

Our unique Disruptor™ Technology uses :



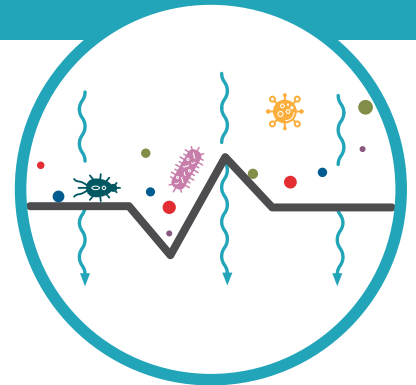
Electrodesorption to trap and remove viruses, bacteria and various other contaminants



Anti-microbial silver to disinfect



Powdered Activated Carbon to reduce odours and improve the taste



DISRUPTOR™ FILTER RANGE



Countertop **Filter**



Undersink **Filter**



Inline **Filter**

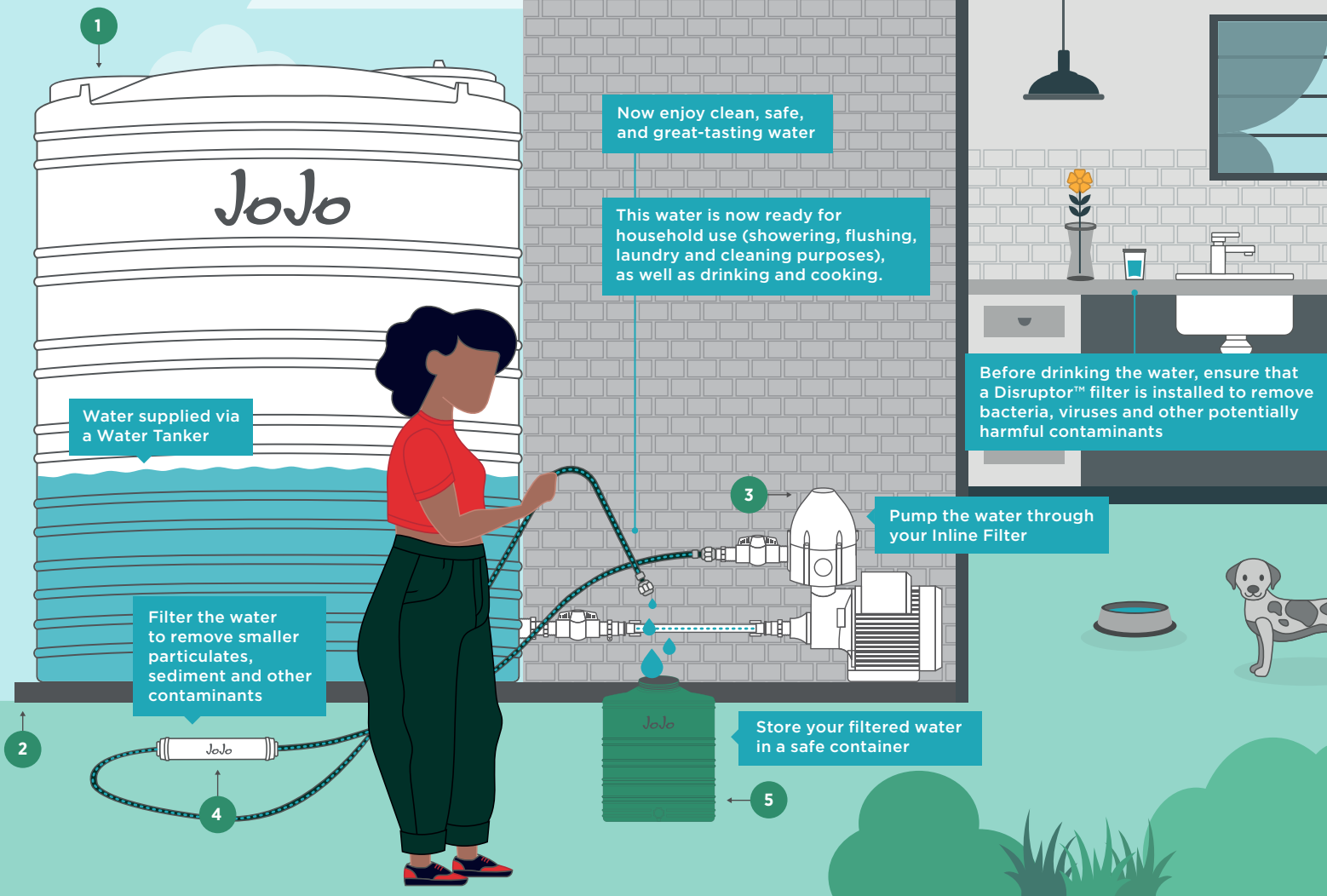


Whole-house **Filter**

The right filter for you will be determined by your water source, the desired application and personal preference.

WATER SOURCE	REQUIREMENTS						
 Water Tanker	 Tank	 Pump	 Inline Filter				
 Rainwater Harvesting	 Tank	 Gutters	 Pre-filtration	 Pump	 Whole-house Filter		
 Municipal Back-up	 Tank	 Pump	 Countertop Filter	or	 Undersink Filter	or	 Whole-house Filter

Water Tanker Solution



USING WATER FROM A WATER TANKER FOR FULL DOMESTIC WATER SUPPLY.

For a basic system you will require the following:

1. Water Storage Tank

2. Base/Plinth

Tanks must be installed on a sound, level and smooth surface. Level paving will suffice, alternatively a concrete plinth needs to be built, ideally with a concrete surface bed of at least 85mm thick. **Note: the base should always be at least 100mm wider than the diameter of the tank.**

3. Pump

When choosing a water pump, it is important to consider the water source, the application and the pressure required to ensure that the pump will meet your requirements.

In order to use our Inline Filter, you require at least 1 bar pressure and a maximum of 3 bar pressure. A small 0.37kW Booster Pump will be sufficient for this application.

4. Inline Water Filter

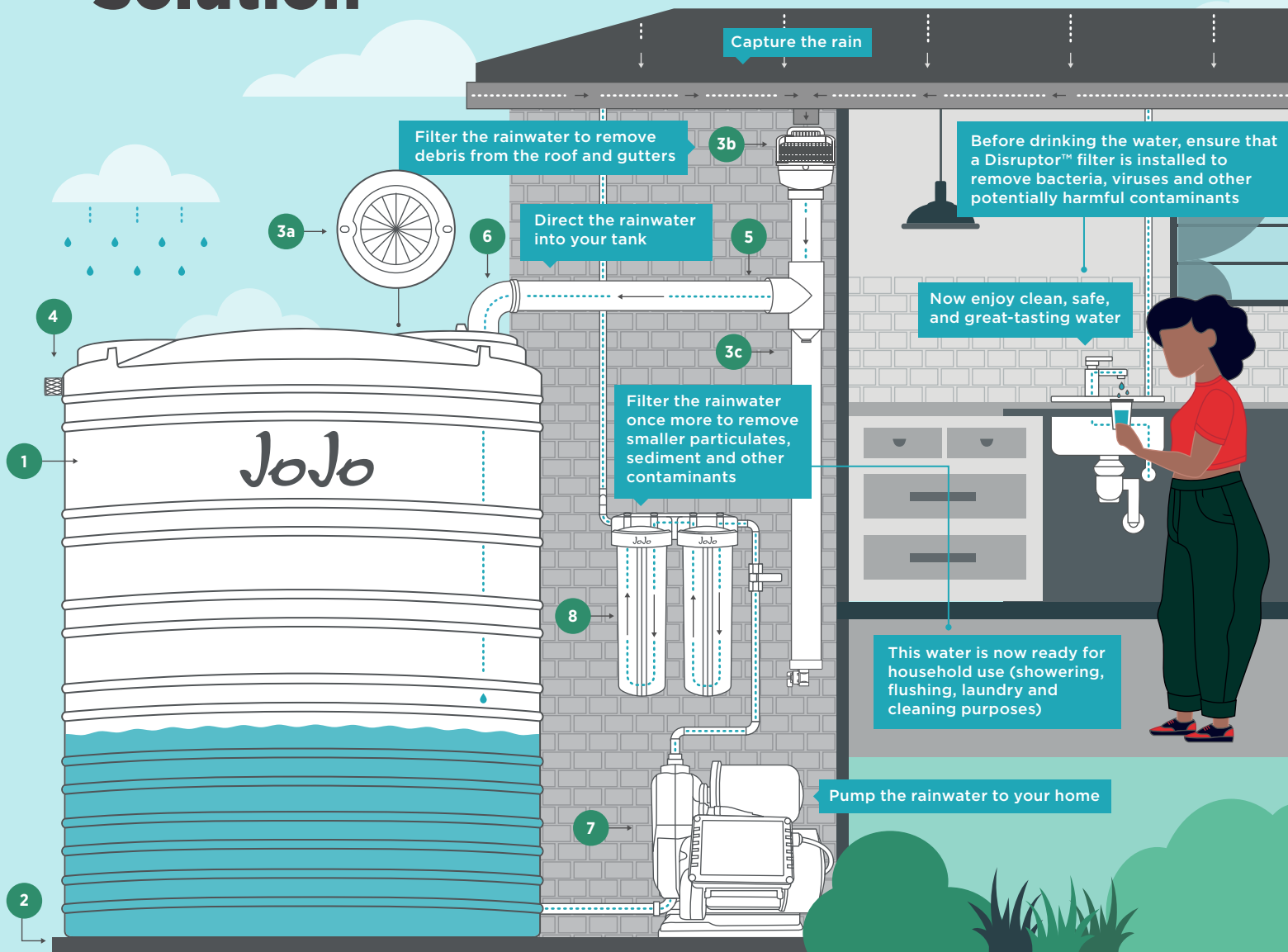
Any water that is used for household applications including cooking and drinking, needs to be treated or filtered to ensure it is safe. If you are unsure of the quality of water, we advise using a Disruptor™ filter to remove any potentially harmful contaminants.

Inline Filter (used to filter the water coming out of your tank or at one single water connection).

5. 20 Litre JoJo Beverage Tank

Store your filtered water in a smaller container/tank to keep inside your home. This way you know that the water inside that container is safe to use for consumption.

Rainwater Harvesting Solution



A RAINWATER HARVESTING SOLUTION FOR FULL DOMESTIC WATER SUPPLY.

For a basic system you will require the following:

1. Water Storage Tank

2. Base/Plinth

Tanks must be installed on a sound, level and smooth surface. Level paving will suffice, alternatively a concrete plinth needs to be built, ideally with a concrete surface bed of at least 85mm thick. **Note: the base should always be at least 100mm wider than the diameter of the tank.**

3. Pre-Filtration

3a. Tank Filter Screen - fitted beneath lid

3b. Rainhead

3c. First Flush Rainwater Diverter

This will vary based on preference and what the water will be used for. Bear in mind that the more options included, the cleaner the water will be that enters into your tank.

4. Tank Mozzie Screen

This 40mm Tank Mozzie Screen can be fitted to your tank overflow or inlet and allows water to pass through while blocking entry for mosquitoes and other insects.

5. Standard Plumbing Pipes - 110mm

These pipes will be required to divert the water into your tank, starting beneath your rainhead into your first flush rainwater diverter and then back into your tank. **Note: the lengths required will vary based on the installation.**

6. Elbow/s - 110 mm

7. Pump

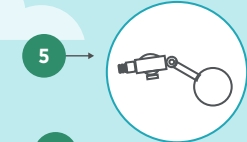
When choosing a water pump, it is important to consider the water source, the application and the pressure required to ensure that the pump will meet your requirements.

8. Water Filter

Rainwater that is utilised for full domestic supply needs to be filtered to potable drinking water standards. Please ensure that your chosen filtration system meets these standards. It needs to be able to remove sediment and particulates, contaminants such as bacteria and any other potentially harmful materials that could be present in the water.

Municipal Back-up Solution

Ensure you control the fill height of your tank and avoid unnecessary wastage.



5

4

Direct the water into your tank for storage

1

JoJo

Municipal Feed

2

3

This water is now ready for household use (showering, flushing, laundry and cleaning purposes)

Filter the water to remove smaller particulates, sediment and other contaminants.

7a

6

Pump the water to your home

Before drinking the water, ensure that a Disruptor™ filter is installed to remove bacteria, viruses and other potentially harmful contaminants

Now enjoy clean, safe, and great-tasting water

7b

A MUNICIPAL BACKUP SOLUTION FOR FULL DOMESTIC WATER SUPPLY.

For a basic system you will require the following:

1. Water Storage Tank

2. Base/Plinth

Tanks must be installed on a sound, level and smooth surface. Level paving will suffice, alternatively a concrete plinth needs to be built, ideally with a concrete surface bed of at least 85mm thick. **Note: the base should always be at least 100mm wider than the diameter of the tank.**

3. Pipes - Assumed ¾ inch galvanised pipes

- 25mm diameter (minimum) from tank to pump
- 20mm diameter (minimum) from pump to house

4. Elbows

Sizes vary according to pipes and quantity according to setup.

5. Float Valve Kit

Allows for effortless filling of a JoJo tank with an automatic shut-off. This can be done manually with a hose, or for a more permanent solution you can connect it to your plumbing line.

6. Pump

When choosing a water pump, it is important to consider the

water source, the application and the pressure required to ensure that the pump will meet your requirements.

7. Water Filter

7a. Whole-house Filter (placed outside to filter all the water used in your house).

7b. Undersink or Countertop Filter (placed inside at one tap for drinking purposes).

Treated municipal water is adequate for household use, but can require additional filtration depending on the quality and the water source. If you are unsure of the quality of water, we advise using a Disruptor™ filter to remove any potentially harmful contaminants before using the water for drinking or cooking.

IMPORTANT

If you want an automated system that fills the tank each time the water is used, you will require a few additional components such as:

- Gate valves (to isolate components and better manage the system)
- Non-return valves (to ensure no back pressure to the main supply)

It is advised to make use of a plumber/professional installer when tying into the main water supply line.

Choosing the right Whole-house Filter combination

Our range of filter cartridges for the JoJo Whole-house Filter can be paired in different combinations to ensure a solution for your unique water needs.

The three Filter Cartridges you can choose from include:



REMOVES
Sediment

1

PP Sediment

Replace every 6 months



REMOVES
Sediment

REMOVES
Chlorine

2

PP Activated Carbon

Replace every 6 to 12 months



REMOVES
Bacteria

REMOVES
Viruses

REMOVES
Parasites

REMOVES
Medication

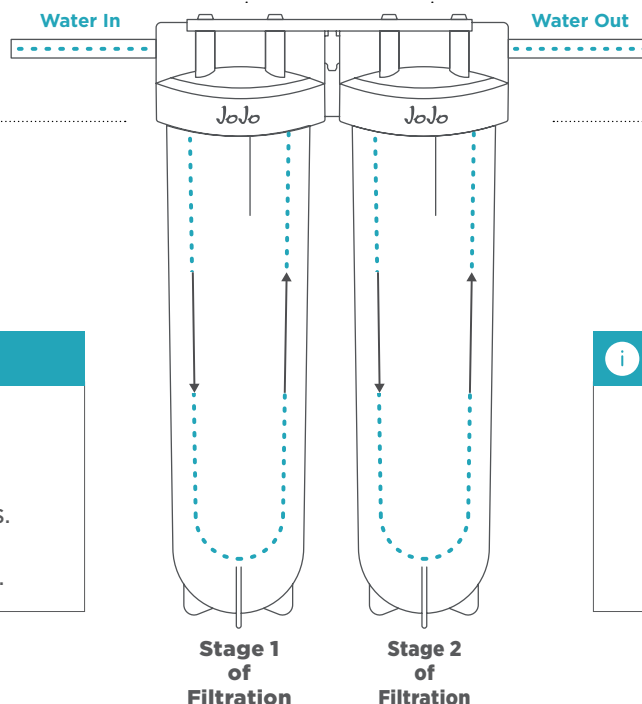
REMOVES
Sediment

REMOVES
Chlorine

3

Disruptor PAC-S 5293

Replace every 8 to 12 months



COMBO EXAMPLES

- Stage 1 – PP Sediment, Stage 2 – PP Activated Carbon.
- Stage 1 – PP Sediment, Stage 2 – Disruptor™ 5293 PAC-S.
- Stage 1 – PP Activated Carbon, Stage 2 – Disruptor™ 5293 PAC-S.

IMPORTANT

Note: if the water is going to be used for drinking purposes, a Disruptor™ filter is required in order to ensure it is safe. Because water quality and volume of consumption varies, filter service life will also vary.