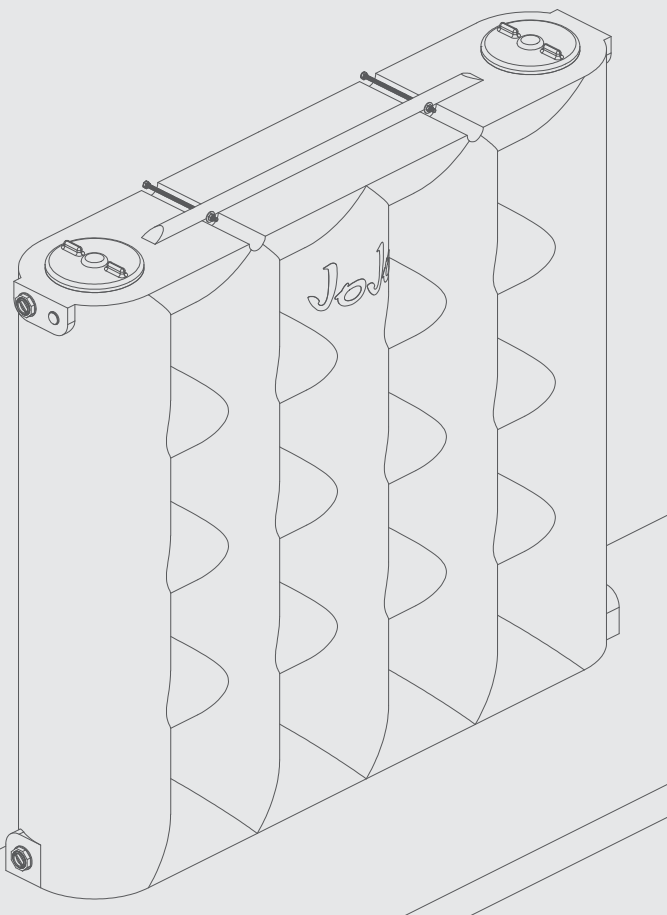


Installing a JoJo SuperSlim tank



JoJo SuperSlim specifications

Tank fitted with

- 2x 250mm screw lids
- 2x 40mm outlets with thumb plugs
- 2x 40mm inlets/overflows with thumb plugs
- 2x 20mm plugs

Supplied with

For effortless filling, if used for backup water supply:



FLOAT VALVE
x1



OPTIONAL
HUSH PIPE x1*



20MM
FEMALE HOSE
CONNECTOR x1

*An optional hush pipe is included to stabilise the float valve and reduce water hammer or bounce (if required) in applications where there are pressure variations. **Note: this float valve is not suited for pressure higher than 4 bar.**

For securing it to a wall:



THREADED ROD
ASSEMBLIES x2



M10 BODY
WASHERS x2



M10 NUTS
x2

Important

Additional fittings supplied with this tank are secured to the end of the rope.

LOOK FOR THIS STICKER TO FIND THE BAG OF ADDITIONAL FITTINGS.

Unique two-sided design

Side 1



Side 2



Dimensions:

Length: 2 020mm
Width: 400mm
Height: 1 800mm

Size:

1 000 litres

Basic installation guidelines

It is important to take note of the following:

1. Tank placement

- The tank must be secured to a wall.
- **Important:** if not secured to a wall, the tank may fall over due to its unique, slim shape.

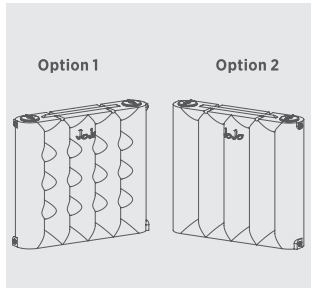
2. Base

It is very important to install the tank on a sound, level, and smooth surface at least 100mm wider on each side than the base of the tank. Level paving will suffice. Alternatively, a concrete slab needs to be built, ideally with a surface bed at least 85mm thick.

You will require the following:

- Hammer drill & 16mm concrete drill bit
- Spirit level
- 17mm spanner
- Marking pen

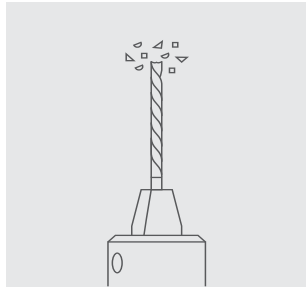
Installation



01

Choose which side of the tank you want to showcase.

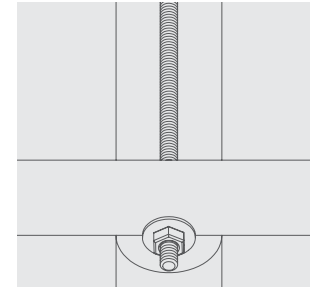
Important: remove the additional fittings supplied with the tank. They are inside a bag, tied to a rope that is secured to one of the fittings at the top of the tank.



04

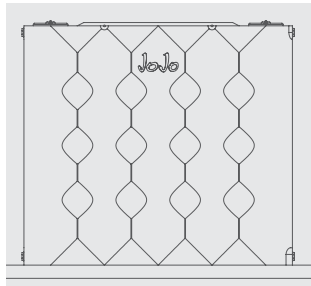
Move the tank out of the way and drill two x 16mm holes in the wall.

Important: make sure the holes are 100% straight and level to ensure they align with the holes in the tank.



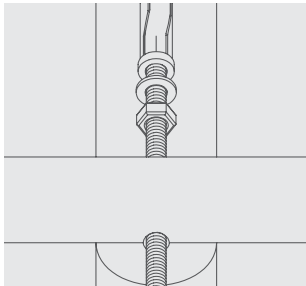
07

On the other side of the tank, place a body washer and a nut over the threaded rod and tighten until they sit flush against the reinforcement bar. **Tip:** the threaded rods secure the tank in place, they are not supposed to pull the tank against the wall.



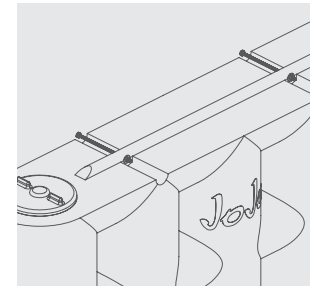
02

Place the tank in the desired location, ensuring it is next to a wall and on a 100% level and smooth base.



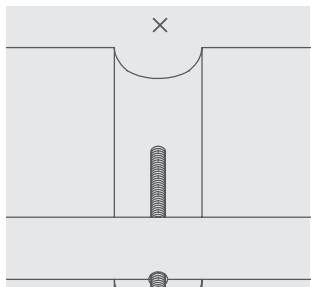
05

With the rawl bolts facing the wall, push both threaded rod assemblies through the holes in the plastic reinforcement bar attached to the top of the tank. Once done, move the tank back into position.



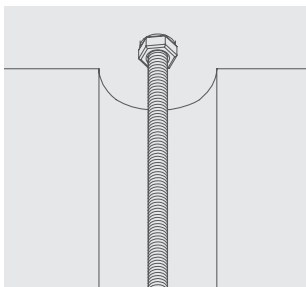
08

Once both sides have been secured to the wall, the installation should resemble this example.



03

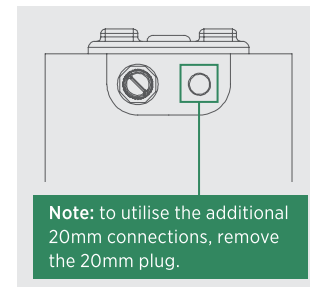
To make drill marks on the wall, push a threaded rod assembly (with the rawl bolts facing away from the wall) through each of the two holes in the plastic reinforcement bar attached to the top of the tank. Mark the positions.



06

Push the rawl bolts into the holes drilled in the wall. Ensure they are flush, and secure them by tightening the nuts.

Important: don't over tighten the nuts.



09

If the tank will be used for backup storage, fit the supplied float valve to the inside of either of the 20mm connections. If using a hosepipe to fill the tank, use the supplied 20mm female hose connector.

Note: the installation instructions after step 9 will differ depending on your water source and requirements. Visit jojo.co.za for guidelines based on your unique solution. Prefer to leave the installation to the pros? Contact one of our preferred installers for assistance.

Scan this code for instructions on how to use a float valve when filling your tank

