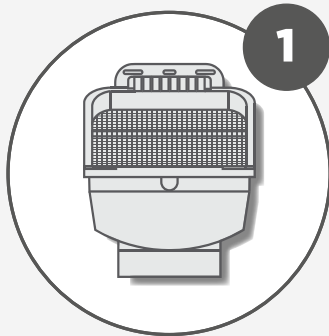
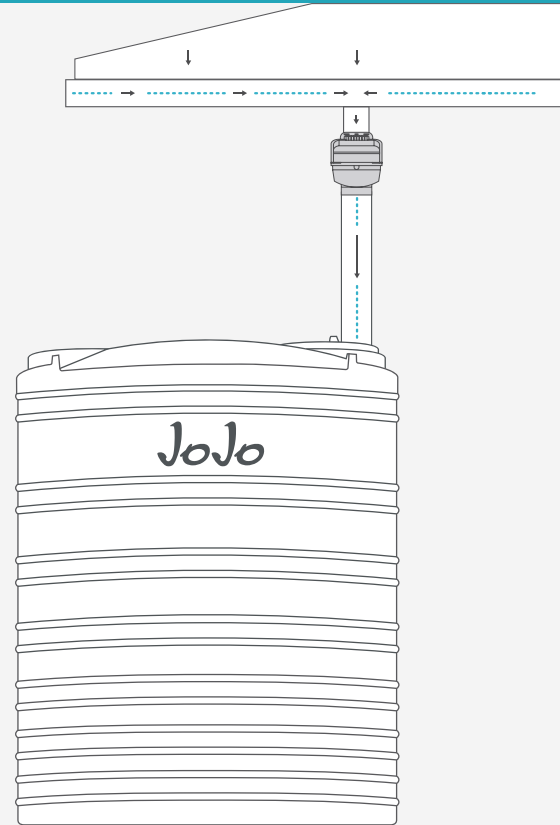
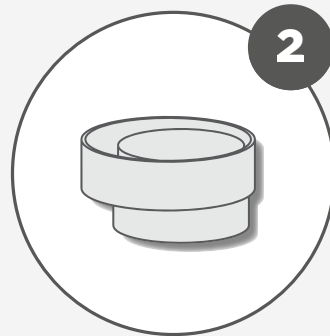


## Using our Rainhead to improve the quality of harvested rainwater

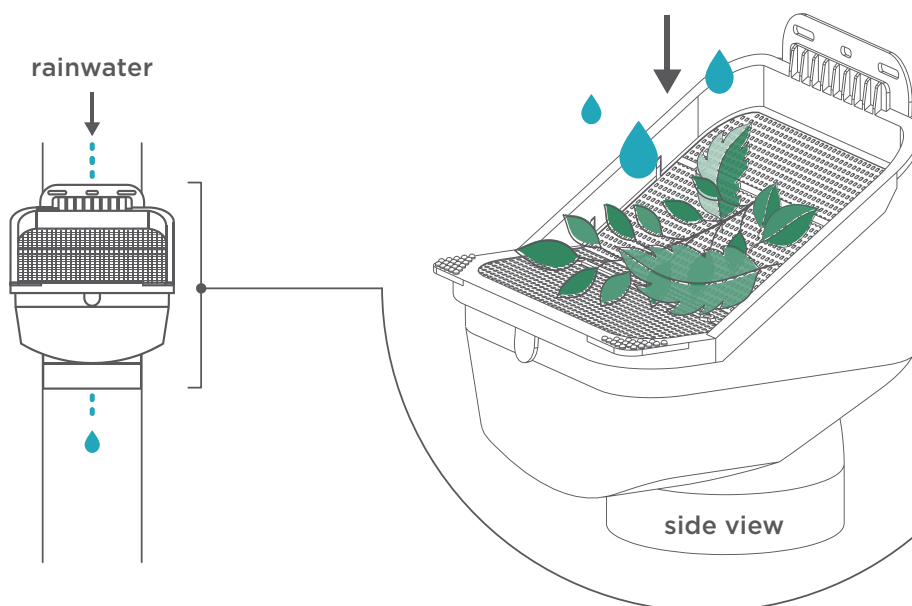
110mm  
rainhead



Adapter for 80mm  
or 75mm pipes



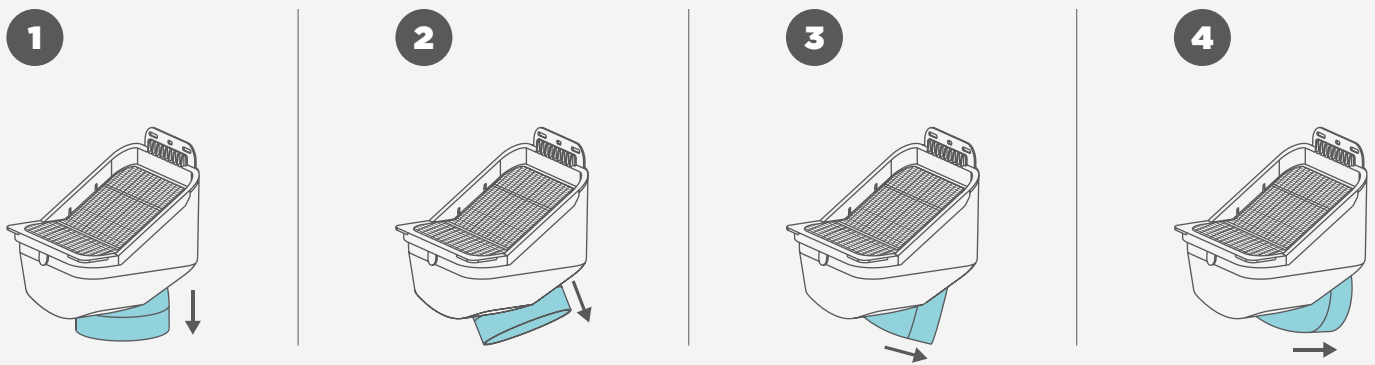
### HOW IT WORKS



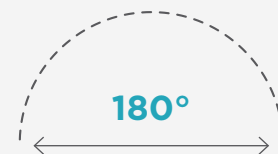
The Rainhead directs leaves and debris away from the flow of water when harvesting rainwater, keeping your JoJo tank free from unwanted organic matter

## Using our Rainhead to improve the quality of harvested rainwater

### IDEAL ORIENTATION



The 180 degree pivot head allows for installation at any angle to ensure an effortless connection from the rainhead to the pipe feeding rainwater into the tank.



### IDEAL LOCATION

Rainheads should be installed underneath each downpipe that supplies rainwater to a tank.

### ADDITIONAL COMPONENTS REQUIRED FOR INSTALLATION

- Standard plumbing pipes in 110mm, 80mm or 75mm (quantity and lengths will depend on installation)
- Pipe holder bat of the correct size for your pipe and anchor screws for the rainhead
- PVC weld glue
- A drill and tools to mount the rainhead to the wall

# Using our Rainhead

## to improve the quality of harvested rainwater

### INSTALLATION

#### 01

Remove the adapter supplied loose inside the rainhead and fit the plastic screen onto the rainhead body.

#### 02

Determine the correct height for the rainhead **(1)**.

**Note:** it should be at a sufficient height for the water to flow into the tank while allowing for at least a 40mm to 80mm gap from the bottom of your gutter downpipe **(A)** to the screen of the rainhead. This gap ensures easy access for cleaning and removal of the screen when required, and prevents debris build-up inside the downpipe.

#### 03

Remove your existing gutter downpipe below the height determined as part of step one, and mount the rainhead **(1)** to the wall using anchor screws.

#### 04

Cut the desired length of pipe to feed water into the tank from the bottom of the rainhead **(B)**.

#### 05

If you are using a 80mm or 75mm plumbing pipe you will need to fit the supplied adapter **(2)** to the bottom of the rainhead **(1)**. To ensure it is properly fitted, push the adapter as far as possible into the rainhead until there is resistance when trying to pull it out again.

**Note:** the smaller end should be facing down.

#### 06

If you are using a 110mm pipe you will not need the adapter.

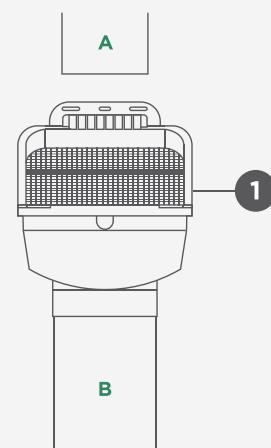
#### 07

For a secure fit, it is advised to use sand paper on all interconnecting sections before applying glue. Once you are satisfied with the test-fitted position and setup, ensure all components are clean and glue in place with PVC weld glue.

#### Important:

All components are to be test-fitted before being glued with PVC weld glue. For a secure fit, it is advised to use sand paper on all interconnecting sections before applying glue.

#### USING A 110MM PIPE



#### USING A 80MM OR 75MM PIPE

