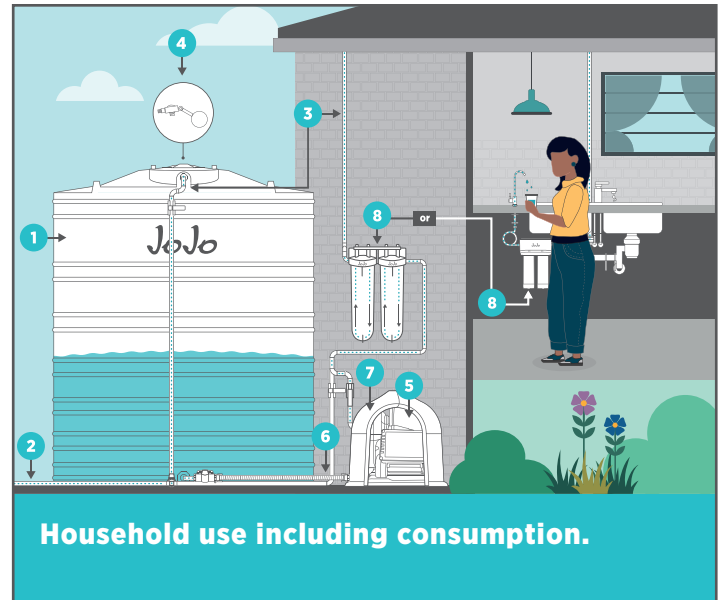
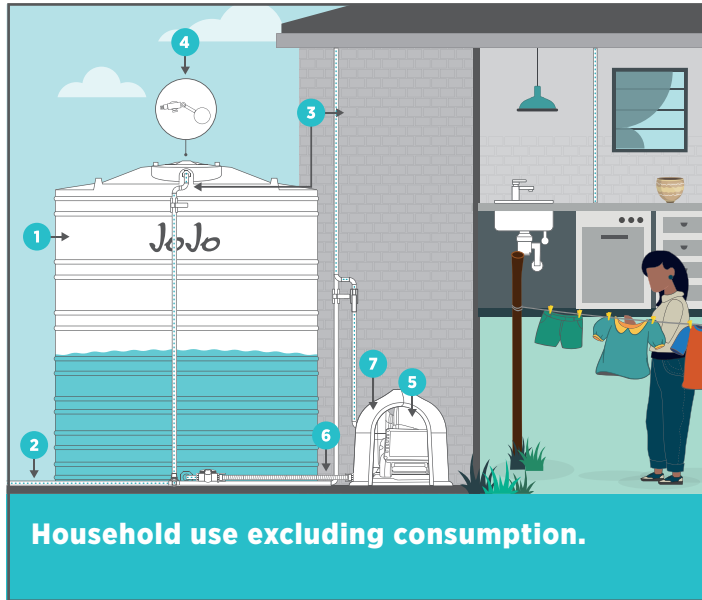


A guide and cost estimate for basic components required.



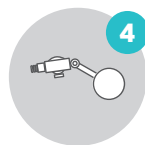
Tank



Base



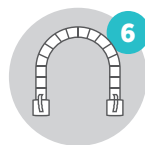
Pipes and Elbows



Float Valve Kit



Pump



Pump-to-tank Connector Kit



Pump Cover



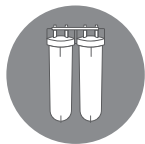
Countertop Filter

or



Undersink Filter

or

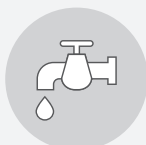


Whole-house Filter

For an automated system you will require a few additional components such as:

- ✓ Gate valves (to isolate components and better manage the system)
- ✓ Non-return valves (to ensure no back pressure to the main supply)

Potential water sources and contaminants that could be present in each:



Municipal



Chlorine



Medicine



Borehole



Sediment



E Coli



Viruses



Bacteria



Fertilizer



Pesticides



Heavy Metals

Cost Estimates

Note: the estimates provided are for the basic components required only, and do not include labour if making use of an installer, or any extras required based on your unique setup and requirements.

	S Small-scale solution	M Medium-scale solution	L Large-scale solution
Cost:	R11 500 - R17 250 incl vat	R18 400 - R28 750 incl vat	R29 900 - R40 254 incl vat
Basic components included:	<ul style="list-style-type: none"> - 750/1 000lt Slimline tank - Concrete slab - Piping and plumbing - Float valve kit - 0.37kW Booster Pump - Pump cover 	<ul style="list-style-type: none"> - 2700lt Vertical tank - Concrete slab - Piping and plumbing - Float valve kit - 0.75kW VSD Pump - Pump cover 	<ul style="list-style-type: none"> - 5250lt Vertical tank - Concrete slab - Piping and plumbing - Float valve kit - 1.5kW VSD Pump - Pump cover

Note: each installation will vary based on the setup and personal preference. For detailed installation guidelines visit our water storage solutions section on our website.