

Product Brochure

JoJo
FOR WATER FOR LIFE



Vertical & Slimline Storage Tanks



TANK	WARRANTY	AVAILABILITY	DIAMETER	HEIGHT
260L*	3-year	S Stock	670mm	940mm
500L*	3-year	S Stock	840mm	1 080mm
500L Backwash	3-year	NS Non-Stock	840mm	1 080mm
750L Slimline™	10-year	S Stock	760mm	1 850mm
1 000L*	10-year	S Stock	1 110mm	1 300mm
1 000L Slimline™	10-year	S Stock	840mm	2 060mm
1 000L SuperSlim	10-year	NS Non-Stock	400mm (width) 2 020mm (length)	1 800mm
1 500L MultiSlim	10-year	NS Non-Stock	760mm (width) 1 620mm (length)	1 890mm
1 500L*	10-year	S Stock	1 410mm	1 200mm
1 800L*	10-year	S Stock	1 200mm	1 780mm
2 000L*	10-year	S Stock	1 420mm	1 450mm
2 400L	10-year	S Stock	1 420mm	1 700mm
2 700L*	10-year	S Stock	1 420mm	1 860mm
2 500L MultiSlim	10-year	NS Non-Stock	760mm (width) 2 500mm (length)	1 960mm
4 750L	10-year	S Stock	1 820mm	2 060mm
5 000L Low Profile*	10-year	NS Non-Stock	2 230mm	1 560mm
5 250L*	10-year	S Stock	1 820mm	2 255mm
5 500L*	10-year	SO Special Order	1 900mm	2 240mm
10 000L*	10-year	S Stock	2 200mm	3 150mm
10 000L Low Profile*	10-year	NS Non-Stock	2 420mm	2 550mm
15 000L*	10-year	NS Non-Stock	2 600mm	3 260mm
20 000L*	10-year	NS Non-Stock	2 600mm	4 270mm

* Also available in medium and heavy-duty chemical variants.



Horizontal Storage Tanks



SIZE	TYPE	HEIGHT	LENGTH	WIDTH	
240L*	NS Chemical Medium Chemical Heavy	650mm	1 080mm	560mm	
500L*	NS Chemical Medium Chemical Heavy	830mm	1 290mm	785mm	
600L*	NS Chemical Medium Chemical Heavy	675mm	1 430mm	955mm	
750L*	NS Chemical Medium Chemical Heavy	715mm	1 520mm	955mm	
900L*	NS Chemical Medium Chemical Heavy	925mm	1 495mm	1 000mm	
1 000L*	NS Chemical Medium Chemical Heavy	1 030mm	1 645mm	990mm	
1 500L*	NS Chemical Medium Chemical Heavy	1 310mm	1 790mm	1 046mm	
2 500L**	NS Water Chemical Medium Chemical Heavy	1 210mm	2 180mm	1 540mm	
4 500L	NS Water Chemical Medium Chemical Heavy	1 430mm	2 320mm	2 070mm	
5 000L Crocodile**	NS Water Chemical Medium Chemical Heavy	1 530mm	2 600mm	2 060mm	
5 500L	NS Water Chemical Medium Chemical Heavy	1 505mm	2 545mm	2 090mm	

* Medium-duty smaller horizontals can store water if made in our darker colours to help prevent algae growth.

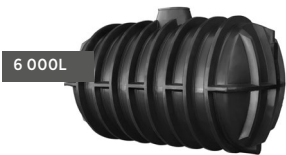
** While the capacity remains the same, tank moulds differ slightly in the Western Cape and Eastern Cape.

Underground Water Storage Tank



SIZE	TYPE	DIAMETER	LENGTH	HEIGHT	AVAILABILITY
6 000L	Water	1 950mm	3 330mm	2 080mm	NS Non-Stock

Sanitation Products



SIZE	TYPE	SUITABLE	WIDTH	LENGTH	HEIGHT	WARRANTY
1 250L	S Septic Conservancy	2-4 People	1 550mm	1 550mm	1 190mm	10-year
1 500L	S Septic Conservancy	2-6 People	1 550mm	1 550mm	1 280mm	10-year
1 750L	S Septic Conservancy	4-6 People	1 550mm	1 550mm	1 390mm	10-year
2 000L	S Septic Conservancy	4-7 People	1 550mm	1 550mm	1 500mm	10-year
2 500L	S Septic Conservancy	4-9 People	1 550mm	1 550mm	1 710mm	10-year
6 000L	S Septic Conservancy	20-25 People	1 950mm	3 330mm	2 080mm	10-year

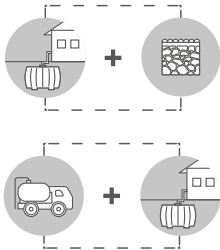
What’s the difference between a Septic and Conservancy Tank?

A **septic tank** treats wastewater by separating solids, allowing partial decomposition, and discharging the liquid into the ground via a soakaway system.

A **conservancy tank** is a sealed underground unit that **stores black and grey water** until it’s pumped out. It doesn’t process waste and is built extra strong to withstand soil pressure, even when empty.

Conservancy tanks can be used for underground water storage. Confirm your application when ordering to ensure a food-grade lining is added.

Important: There is a specific, highly recommended installation procedure for underground tanks. Please refer to our website for these guidelines and follow them to ensure your warranty remains intact.



Accessory Range



TANK ACCESSORIES	RAINWATER HARVESTING ACCESSORIES
<p>Water Tank Float Valve Kit</p>	<p>Rainhead</p>
<p>20mm Water Tank Fill Valve</p>	<p>First Flush Rainwater Diverter</p>
<p>40mm Water Tank Fill Valve</p>	<p>480mm Water Tank Filter Screen</p>
<p>Mechanical Tank Level Indicator</p>	<p>480mm Plastic Filter Screen</p>
<p>DIY Slimline Tank Stand</p>	<p>Tank Mozzie Screen</p>
TANK FITTINGS	WATER MONITORING DEVICES
<p>40mm Water Fitting</p>	<p>IoT Tank Level</p>
<p>50/40mm Reducer</p>	<p>IoT Water Meter</p>

Discover the full JoJo accessories range online at www.jojo.co.za.



Pressure Pumps



PUMP		BEST EFFICIENCY PRESSURE RANGE	BEST EFFICIENCY FLOW RANGE	NUMBER OF BATHROOMS	
0.37kW Basic Booster Pump & Connector Kit	S	1 to 2.3 bar	5 to 15lt/min	1	
0.37kW Booster Pump	S	1 to 2.4 bar	10 to 20lt/min	1	
0.37kW Smart Series Pump	S	1 to 2.2 bar	25 to 58lt/min	1	
0.55kW Smart Series Pump	S	1.5 to 3.4 bar	25 to 58lt/min	2	
0.75kW Centrifugal Pump	S	1.9 to 2.8 bar	40 to 80lt/min	3	
0.75kW Smart Series Pump	S	2 to 3.4 bar	39 to 67lt/min	3	
1.1kW Centrifugal Pump	S	2.7 to 3.5 bar	40 to 90lt/min	4	
1.1kW Smart Series Pump	S	2 to 3.5 bar	67 to 150lt/min	8	

Maximise the value of your pump purchase

Protect your investment – Add a Pump Cover to shield your pump from the elements and extend its lifespan.
Simplify your setup – Add a Pump-to-Tank Connector Kit for a quick, secure connection to your JoJo water tank.

Borehole Pumps



PUMP		BEST EFFICIENCY HEAD RANGE	BEST EFFICIENCY FLOW RANGE	MAX DEPTH	
0.37kW 3" SDM Borehole Pump Kit	NS	33 to 60m	20 to 40lt/min	For use in boreholes up to 65 meters in depth	
0.55kW 3" SDM Borehole Pump Kit	NS	46 to 84m	20 to 40lt/min	For use in boreholes up to 91 meters in depth	
0.75kW 3" SDM Borehole Pump Kit	NS	59 to 107m	20 to 40lt/min	For use in boreholes up to 117 meters in depth	

Pump Accessories



S

Pump to Tank Connector Kit

- All accessories included
- Suitable for use with our 0.37, 0.55, 0.6 and 0.75kW Booster Pumps



3

S

Standard Pump Cover

Height: 500mm
Width: 540mm
Length: 540mm



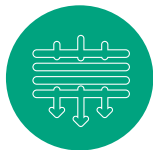
3

S

Medium Pump Cover

Height: 620mm
Width: 540mm
Length: 540mm

Water Filtration Range



Countertop Filter

A plug-and-play filter that is connected to your tap for healthy water in minutes.



Undersink Filter

A compact under-sink filter supplied with everything required for installation.



Inline Filter

The ideal filter solution when access to clean water is limited, both in or outside of the home.



20 Inch 1-Stage Filter Casing

Ideal for basic sediment removal from your incoming water supply.
Cartridges sold separately

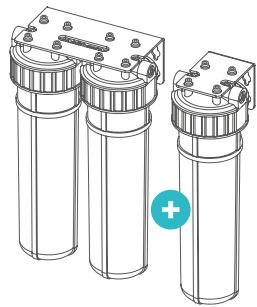


20 Inch 2-Stage Filter Casing

Ideal for advanced filtration with Sediment or Carbon as 1st stage and Disruptor™ as 2nd.
Cartridges sold separately

REQUIRE EXTRA FILTRATION?

No problem! Simply link our 1- and 2-stage casings in series.



Filter Cartridges



Countertop and Undersink PP Sediment Filter Cartridge

Removes sediment, dirt, rust and other suspended particles .



Countertop and Undersink Disruptor™ Filter Cartridge

Removes viruses, bacteria, parasites, chlorine and more.



20 Inch 1 Micron PP Sediment Filter Cartridge

Removes sediment, dirt, rust and other suspended particles down to 1 Micron in size.



20 Inch 5 Micron PP Sediment Filter Cartridge

Removes sediment, dirt, rust and other suspended particles down to 5 Micron in size.



20 Inch Activated Carbon Filter Cartridge

Removes chlorine, sediment, dirt, rust and other suspended particles.



20 Inch Disruptor™ Filter Cartridge

Removes viruses, E.coli, cysts, bacteria, parasites, chlorine, trace pharmaceuticals, some heavy metals and more.



Game-Changing Disruptor™ Technology

JoJo's filtration range is powered by Disruptor™, a revolutionary breakthrough in water purification that uses electroadsorption — an advanced process that activates an electrical field using only water to attract and trap even the tiniest contaminants.



REMOVES Bacteria



REMOVES Viruses



REMOVES Parasites



REMOVES Sediment



REMOVES Medicine



REMOVES Chlorine

Why Choose Disruptor™ Filters?

- ✓ Comprehensive purification in a single filter
- ✓ No water wastage
- ✓ Operates without electricity
- ✓ Preserves healthy minerals
- ✓ Outperforms conventional filters in removing contaminants



Garden and Home Products



1

S

20L Beverage Tank

Height: 380mm
Diameter: 290mm



3

NS

500L Backwash Tank

Height: 1 080mm
Diameter: 840mm
Includes fittings and accessories



3

S

Small Dog Kennel

Height: 505mm (door 290mm)
Width: 482mm (door 210mm)
Length: 575mm



3

S

Medium Dog Kennel

Height: 785mm (door 480mm)
Width: 710mm (door 360mm)
Length: 860mm



3

S

Extra Large Dog Kennel

Height: 1 110mm (door 700mm)
Width: 950mm (door 500mm)
Length: 1 320mm



3

S

Extra Large Dog Kennel (Igloo)

Height: 1 030mm (door 875mm)
Length: 1 390mm (door 495mm)
Width: 1 390mm



3

S

Screw-on-Lid Drums

50L | 90L | 210L



3

S

Clip-on-Lid Drums

100L | 210L



Agricultural Products



SILO TANKS		DIAMETER	HEIGHT
200L	NS	550mm Bottom 135mm	1 165mm
300L	NS	670mm Bottom 130mm	1 175mm
1 200L*	NS	1 110mm Bottom 300mm	1 900mm

SILO TANKS		DIAMETER	HEIGHT
3 000L*	NS	1 560mm Bottom 290mm	2 260mm
5 000L*	NS	1 800mm Bottom 340mm	2 810mm
17 000L*	NS	2 600mm Bottom 340 mm	4 430mm

Silo Tanks are available in medium- and heavy-duty chemical variants, each backed by a 10-year warranty.
* Stands are available for these silo tanks as non-stock items.



3

S

160L Sheep Trough

Height: 505mm
Width: 430mm
Length: 2 110mm



3

S

250L Cattle Trough

Height: 490mm
Width: 830mm
Length: 1 290mm



3

S

500L Cattle Trough

Height: 560mm
Width: 950mm
Length: 1 700mm



3

NS

Haysaver

Height: 790mm
Width: 705mm



3

S

Owl House

Height: 425mm
(base to top of gable)
Width: 455mm
Length: 545mm



Lead Times & Product Availability

STOCK & NON-STOCK ITEMS

- S

This icon indicates that a product is carried in stock with a **7 calendar day lead time**, subject to delivery constraints.
- NS

This icon indicates a product that is non-stock ie. made to order and has a **14 calendar day lead time**, subject to delivery constraints.
- SO

This icon indicates that a product can only be ordered as a special order, and **availability/lead time will then have to be confirmed with the relevant branch.**

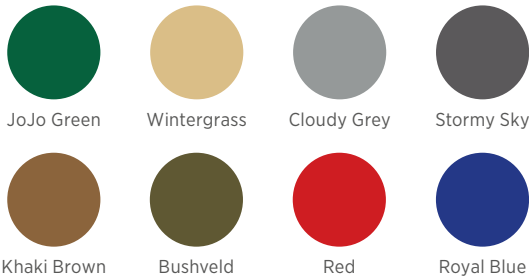
PRODUCT WARRANTIES

Quality is our top priority, which is why every JoJo product comes with a quality warranty. The warranty period for each product is indicated by the following badges:



COLOUR RANGE

Water Tanks



Colours may differ slightly due to printing or display variations.

Each product range is stocked in select colours, but can be made in any of our colours on request – subject to practical considerations and extended lead times.

Chemical Tanks



Need assistance? We're here to help!

T +27 11 695 8300 | E productinfo@jojo.co.za

Visit www.jojo.co.za to explore our full range.